

MEMORANDUM FOR THE RECORD 20 LGS 02 Adult Steelhead Mortality**SUBJECT: Little Goose adult steelhead mortality during dewatering of adult fish channel**Background

Little Goose Lock and Dam dewatered the adult fish channel on February 10. Once the channel was dewatered to a safe level, Juvenile Fish Facility staff began a fish salvage operation. During the salvage, 47 adult steelhead, 1 juvenile steelhead, 1 sculpin, 2 yellow perch and 1 sucker were collected and released to the tailrace via holding tank and crane.

On February 11, maintenance staff working on the fallback fence in the adult channel noticed that there were fish stranded on the grating of the drain in the adult channel. They discovered 1 clipped adult steelhead, 1 clipped juvenile steelhead and 2 unclipped juvenile steelhead mortalities.

The adult channel is an exceptionally challenging area to conduct a fish salvage due to the immense leakage (Image 1). The leakage creates a turbulent area where fish are not easily seen or caught during a fish salvage. This year was also challenging due to the increased turbidity in from recent rainfall. Lastly, the section of the adult channel north of the powerhouse is never full dewatered due to leakage. This area maintains about 1-2 feet of water once the other portions of the channel are fully dewatered.

Path Forward

Plan for adequate time for a thorough fish salvage. Continue to monitor cracks and leakage within that adult channel to assist with periodization for future repairs.

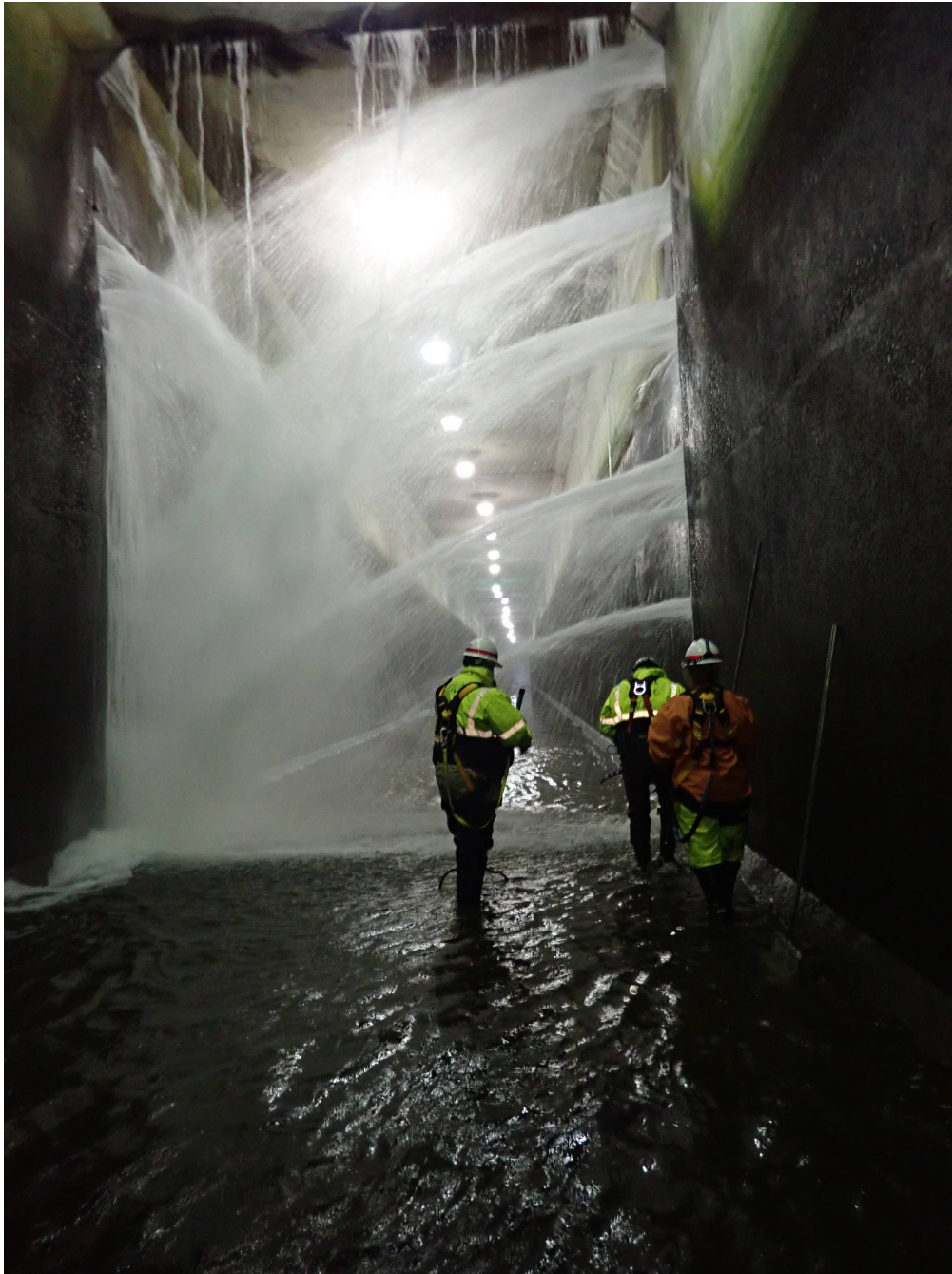
Estimated mortalities by species, and origin:

Adult Clipped Steelhead	Juvenile Clipped Steelhead	Juvenile Unclipped Steelhead
1	1	2

- A. Species – Steelhead *Oncorhynchus mykiss*
- B. Origin – Wild/Hatchery
- C. Length – Unknown
- D. Marks and tags – Unknown
- E. Marks and Injuries found on carcass – N/A

- F. Cause and Time of Death – Between the evening of February 10 and morning of February 11, 4 fish which were missed when conducting the fish salvage were stranded on the drain grating in the adult channel.
- G. Future and Preventative Measures – The Juvenile Fish Facility staff were unable to start the fish salvage operation until approximately 14:00 due to unwatering time, crane operation and other coordination issues. The fish salvage was not completed until 16:45. Additional time in the future could help prevent these issues.

Image 1: Little Goose adult fish channel leakage.



Sincerely,
Scott St. John
Project Fisheries Biologist
Little Goose Dam
(509) 399-2233 ext. 263
Scott.St.John@usace.army.mil